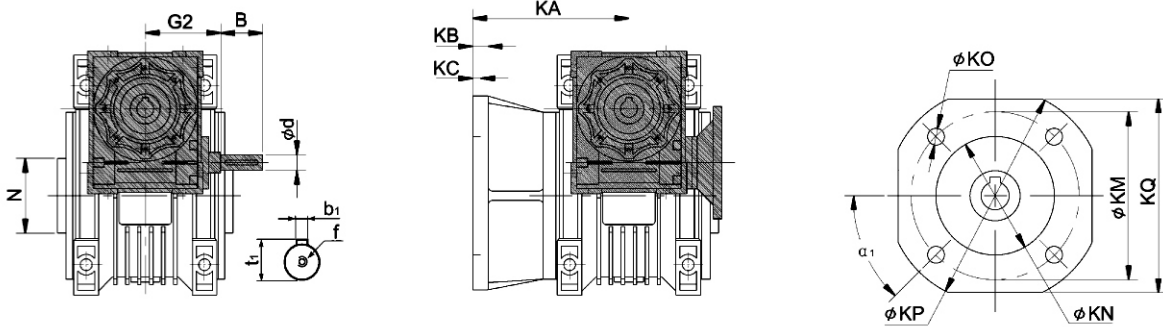




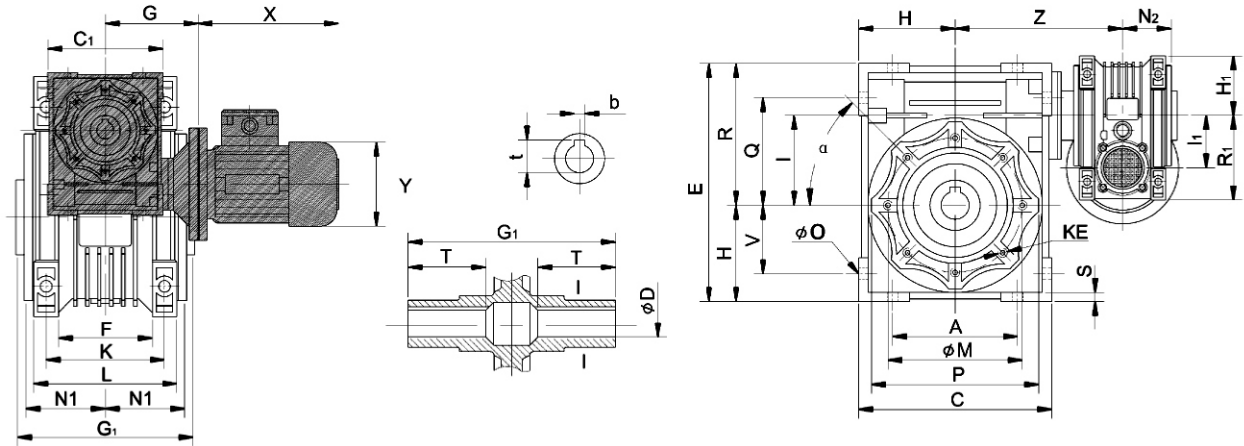
DOUBLE BL (WORM-WORM) SERIES INSTALLATION DIMENSIONS

BL-WW

Output Flange



BLM-WW



Size	A	B	C	C ₁	D (H7)	d (j6)	E	F	G	G ₁	G ₂	H	H ₁	I	I ₁	L	M	N(h8)	M ₁	N ₂	O	P	Q	R	R ₁	S	T	V	Z	K	KA		
																															F	FB	FL
25/30	54	-	80	70	14	-	97	32	45	63	-	40	35	30	25	55	65	55	29	22.5	6.5	7.5	44	57	48	5.5	21	27	100	44	54.5	-	-
25/40	70	-	100	70	18 (19)	-	121.5	43	45	78	-	50	35	40	25	71	75	60	36.5	22.5	6.5	87	55	71.5	48	6.5	26	35	115	60	67	76.5	97
30/40	70	20	100	80	18 (19)	9	121.5	43	55	78	51	50	40	40	30	71	75	60	36.5	29	6.5	87	55	71.5	57	6.5	26	35	120	60	67	76.5	97
30/05	80	20	120	80	25 (24)	9	144	49	55	92	51	60	40	50	30	85	85	70	43.5	29	8.5	100	64	84	57	7	30	40	130	70	90	87.5	120
30/63	100	20	144	80	25 (28)	9	174	67	55	112	51	72	40	63	30	103	95	80	53	29	8.5	110	80	102	57	8	36	50	145	85	82	99	112
40/75	120	23	172	100	28 (35)	11	205	72	70	120	60	86	50	75	40	112	115	95	57	36.5	11	140	93	119	71.5	10	40	60	165	90	111	-	-
40/90	140	23	208	100	35 (38)	11	238	74	70	140	60	103	50	90	40	130	130	110	67	36.5	13	160	102	135	71.5	11	45	70	182	100	111	-	-
50/110	170	30	252.5	120	42	14	295	-	80	155	74	127.5	60	110	50	144	165	130	74	43.5	14	200	125	167.5	84	14	50	85	225	115	131	-	-
63/130	200	40	292.5	144	45	19	335	-	95	170	90	147.5	72	130	63	155	215	180	81	53	16	250	140	187.5	102	15	60	100	245	120	140	-	-
63/150	240	40	340	144	50	19	400	-	95	200	90	170	72	150	63	185	215	180	96	53	18	250	180	230	102	18	72.5	120	275	145	155	-	-

F	KB			KC	KE	α	α ₁	KM			KN (H8)			KO			KP			KQ			b	b ₁	f	t	t ₁	Kg
	F	FB	FL					F	FB	FL	F	FB	FL	F	FB	FL	F	FB	FL	F	FB	FL						
6	-	-	-	4	M6 x 11 (n,4)	0°	90°	68	-	-	50	-	-	80	-	-	80	-	-	70	-	-	5	-	-	16.3	-	2.1
7	9	7	4(5)	M6 x 8 (n,4)	45°	90°	87	115	87	60	95	60	9 (n,4)	9.5(n,4)	9(n,4)	110	140	110	95	-	95	6(6)	95	-	20.8(21.8)	-	3.2	
7	9	7	4(5)	M6 x 8 (n,4)	45°	90°	87	115	87	60	95	60	9 (n,4)	9.5(n,4)	9(n,4)	110	140	110	110	-	110	6(6)	110	-	20.8(21.8)	10.2	3.9	
9	10	9	5(5)	M8 x 10 (n,4)	45°	90°	90	130	90	70	110	70	11 (n,4)	9.5(n,4)	11(n,4)	125	160	125	110	-	110	8(8)	110	-	82.3(27.3)	10.2	5.0	
10	11	10	6(5)	M8 x 14 (n,8)	45°	90°	150	165	150	115	130	115	11 (n,4)	11(n,4)	11(n,4)	180	200	180	142	-	142	8(8)	142	-	28.3(31.3)	10.2	7.8	
13	-	-	6	M8 x 14 (n,8)	45°	90°	165	-	-	130	-	-	14 (n,4)	-	-	200	-	-	170	-	-	8(10)	-	-	31.3(38.3)	12.5	12.0	
13	-	-	6	M10 x 18 (n,8)	45°	90°	175	-	-	152	-	-	14 (n,4)	-	-	210	-	-	200	-	-	10(10)	-	-	38.3(41.3)	12.5	16.0	
15	-	-	6	M10 x 18 (n,8)	45°	45°	230	-	-	170	-	-	14 (n,8)	-	-	280	-	-	260	-	-	12	-	M6	45.3	16.0	39.2	
15	-	-	6	M12 x 21 (n,8)	45°	22.5°	255	-	-	180	-	-	16 (n,8)	-	-	320	-	-	290	-	-	14	-	M6	48.8	21.5	55.0	
15	-	-	6	M12 x 21 (n,8)	45°	22.5°	255	-	-	180	-	-	16 (n,8)	-	-	320	-	-	290	-	-	14	-	M6	53.8	21.5	93	